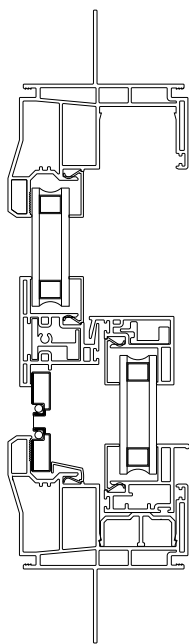
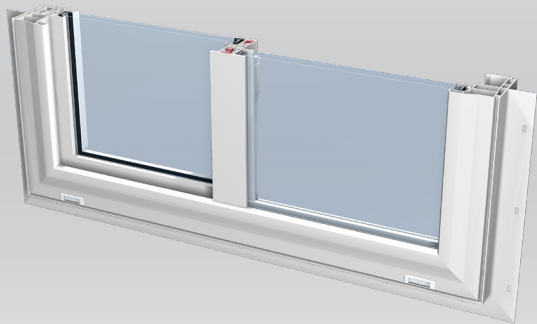


SS46 Single Slider

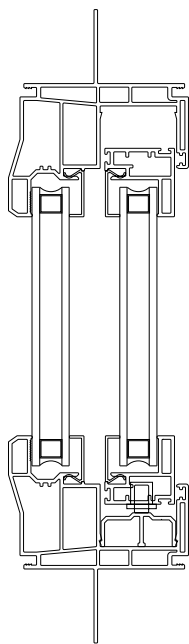
New Construction

FEATURES and BENEFITS

- Made in the USA. 100% U.S. components
- Lead free
- EnergyStar® rated and labeled
- Aesthetically-pleasing exterior frame design
- All-welded frame and sash
- DP50 performance levels
- Dual weatherstripping
- Easy drywall pass-through capability
- Full complement of accessory profiles
- Full family of products (hung, slider, and picture)
- Factory applied WM-180 brick mould or 5/4 x4 exterior trim available with nail fin
- Full 1 1/2" integral nail fin
- 2 7/8" frame width
- Optimum designed aluminum sash reinforcement
- Long reach interlock. No colliding or missing
- Sweep lock, no keeper needed. Passes forced entry



Top View



Side View

PERFORMANCE

THERMAL INSULATION

GLASS	Uc Value	R Value	SHGC
Low-E 270	0.29	3.49	0.27
Low-E 366	0.29	3.49	0.20
Low-E 366 w/ i89	0.25	4.00	0.20

STRUCTURAL DATA

Air Infiltration @ 25mph	0.10 cfm/ft ²
Water Penetration	7.50 psf
Uniform Loads	+/- 75.00 psf

AAMA RATING: PG50-HS

